

# trending:color

Designers are paying close attention to texture, contrast and color for fall 2011 – pairing menswear with feminine twists, warm prints with cool metals, incorporating both old and new influences, and creating an intriguing balance between colors.

-  **Bamboo**, a surprising fall hue, brings a warm, exotic flavor to the season.
-  Radiant **Emberglow**, a traditional autumnal tone, emanates the warmth of a glowing fire.
-  Dynamic **Honeysuckle** adds a bold punctuation point!
-  **Phlox**, a magical, deep purple with a hint of mystery, is an outstanding statement when worn on its own.
-  Evoking the freshness of a cool mist in a dark forest, **Cedar** is a versatile, mid-tone neutral green.
-  **Deep Teal**, a strong, blue-toned green, suggests ocean depths and the color of the sky as daylight descends into darkness.
-  Rich, decadent **Coffee Liqueur** brings a sense of elegance to fall, and is a savory alternative to basic black.
-  A deliciously warm camel tan, **Nougat** is tastefully embellished by Phlox, Emberglow or Honeysuckle.
-  **Orchid Hush**, a unique tone of gray with complex orchid undertones, blends well with any other color in the palette.
-  **Gray**, a reliable medium tone, remains, as always, a practical, dependable staple.
-  **Bordeaux**, a rich berry color warms you up, looks great paired with spicy browns and metallics.

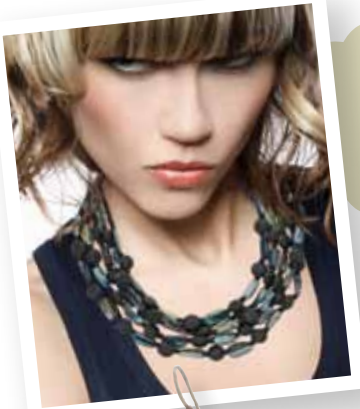


trends *&*  
techniques that help you  
**discover** your  
personal **style**

# Discover this season's musthave's

Next season's collection range from traditional with a twist to out of this world. Here are some of the 2011 Fall Season must-have items!

pencil skirts in colors & prints



layered contrasting metals

leather



mismatched bracelets

Stack on the arm candy!

slim tapered pants



Statement rings



colored fur

bold gold jewelry



edgy cuff watches



ponchos



Always accessorize the thinnest part of your body... your wrist!

Long necklaces and v-necklines elongate and slim.

large pendant necklaces



lady chic



Look 10 lbs thinner instantly!

Dressing in all one color (mono-chromatic) will help give the illusion of appearing 10-20 pounds thinner and 3 inches taller. Each horizontal line break of color adds pounds!



pumps